

WORKFORCE VISIBILITY WITHOUT PRIVACY INTRUSION

Harmonizing Employee Privacy, Performance, and Wellness

The working world has changed and so must technology. Traditional Employee Monitoring solutions that rely on intrusive surveillance techniques breach employee privacy and erode trust. While the intent may be to track activity and productivity towards a goal of professional development and operational efficiency, the net result is often a culture of skepticism, caution, and doubt.

Work-from-Anywhere has increased the need for senior leadership and management to learn from the workforce in a new way now that they are no longer able to 'manage by physical proximity' or engage in meaningful interpersonal, face-to-face communications. Employee Surveillance is the WRONG answer.

"Electronically monitored employees [are] substantially more likely to take unapproved breaks, disregard instructions, damage workplace property, steal office equipment, and purposefully work at a slow pace, among other rule-breaking behaviors."

[Monitoring Employees Makes Them More Likely to Break Rules,](#)
Harvard Business Review, June 2022



**Bring Your Own
Application Awareness**



**Employee Wellness &
Performance Visibility**



**Remote Worker
Analytics**

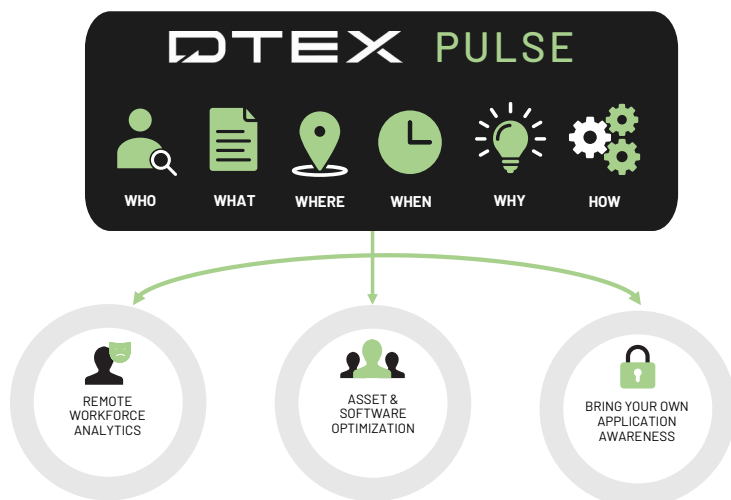


**Software License
Optimization**

Refocus Motivations: Stop Watching, Start Learning

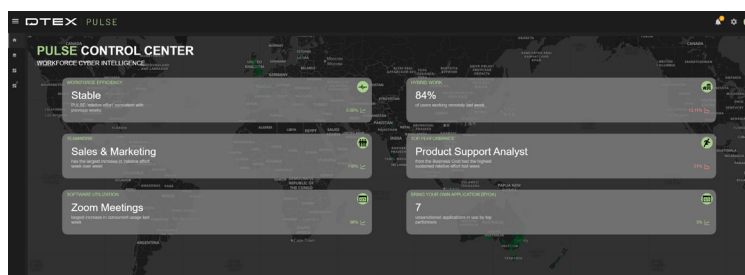
The modern workforce is a real-time source of enterprise intelligence whose behaviors and contributions offer a rich, contextual data signal that lends insight into the utilization of enterprise applications, the effectiveness of hybrid work models, the adoption of personal productivity tools (Bring Your Own Application or BYOA), the usefulness of training, and perhaps most importantly, an employee's level of personal and professional well-being.

By refocusing motivations on 'learning' vs. 'monitoring,' employers can build trust with employees, helping to strengthen their sense of moral responsibility, enhance perceptions of justice, and thus preserve, and grow, a sense of corporate loyalty.



DTEX PULSE is a Workforce Cyber Intelligence solution built to support digital transformation initiatives and related human capital management programs by delivering IT, HR, and finance teams the ability to non-intrusively measure employee engagement with organizational assets and identify opportunities for cost, performance, and operational efficiencies.

DTEX PULSE enables organizations to learn from their workforce by anonymizing an employee's physical interactions with organizational assets (data, machines, applications, and people), aggregating these Interactions across the entire business, and then performing analysis to understand engagement levels without compromising privacy. DTEX PULSE is NOT an employee surveillance tool. DTEX PULSE's patented pseudonymization technology and unique data minimization techniques ensure employee privacy is maintained, while innovative behavioral machine-learning models help HR, IT, finance, and cybersecurity teams deliver better day-to-day experiences and foster better outcomes for employees and the organization.



WORKFORCE CYBER INTELLIGENCE WITH DTEX PULSE IS:

ACCURATE

PULSE doesn't deliver rogue alerts or incorrectly highlight simple irregularities. It's smart enough to understand the difference between normal and out-of-the-ordinary trends, enabling you to quickly zero-in on areas that deserve your analysis and attention.

ACTIONABLE

PULSE gives you the operational-specific information you need, in real time, via easy-to-use dashboards that are built to be shared and used to drive decisions.

EFFICIENT

PULSE replaces intrusive Employee Monitoring solutions while providing human-layer context to asset management, ERP, CRM, and HCM platforms. It delivers historical analysis capabilities, calculates PULSE RATE™ and Trend Benchmark reports, and produces an executive overview of workforce engagement and organizational efficiency.

EXTENSIBLE

PULSE allows you to instrument every user action with business data and applications across the entire enterprise. This helps you see and understand workforce behavior in context of region, department, and role regardless of geo-location, on and off network.

LIGHTWEIGHT

A zero-impact, cloud-native solution, PULSE collects only 3-5MB of data per user each day with low CPU usage and zero impact on employee productivity or endpoint performance.

REPORTING

Live, interactive dashboards for Remote Workforce Analytics, Software Utilization, BYOA (Bring Your Own App) and more offer cross-functional teams near real-time visibility and intelligence regarding workforce engagement, wellness, asset utilization, performance, and productivity without invading privacy. Benchmarking reports and cohort analysis let you compare operational efficiency trends across departments, locations, job roles, seniorities, job tenure, and remote vs. office vs. hybrid workers.



Remote Workforce Analytics

to help quantify the impact of employees and teams working remotely by analyzing application usage and access to data, both on and off the corporate VPN.



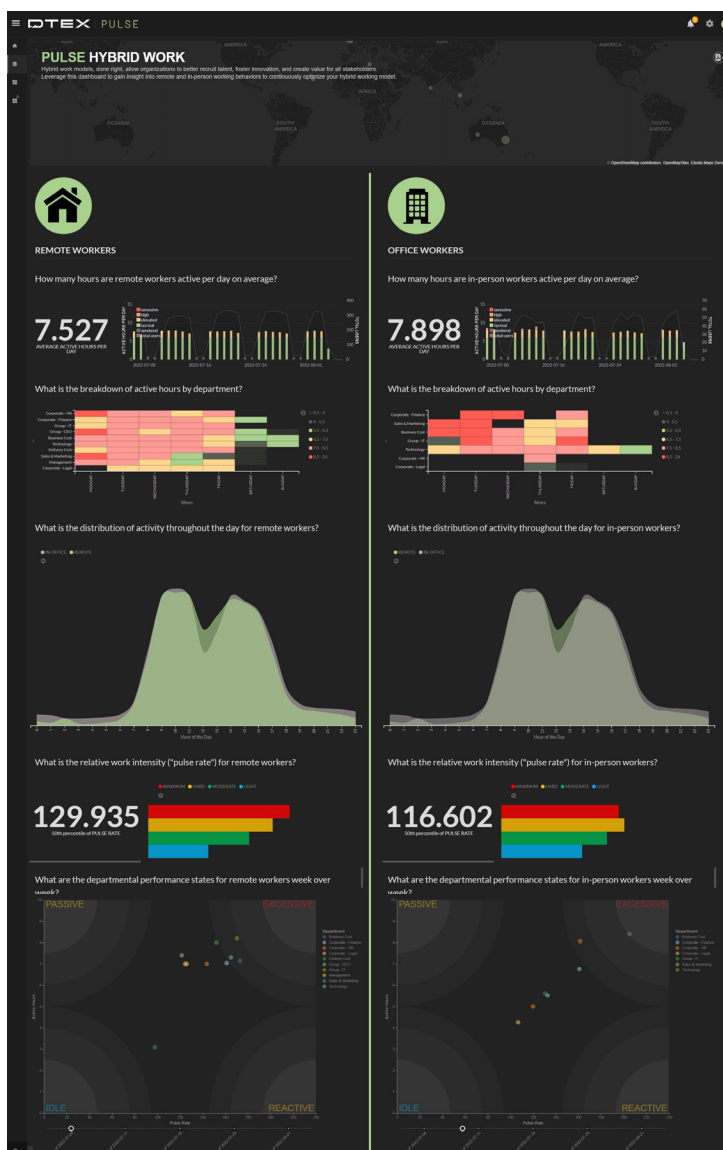
Software License Optimization

to help answer why, how, when and for how long employees use enterprise assets by providing contextual intelligence related to actual software utilization. This helps IT and procurement teams analyze the human habits that drive and disrupt workflows, and helps them understand what's working, what's not, and how they can adapt their strategies to support a more efficient workforce.



Bring Your Own Application Awareness

analyzes SaaS application usage data by top performers to discover authorized and unauthorized SaaS applications which support technology, efficiency, and innovation goals, without compromising a strong security posture.



DTEX
WORKFORCE CYBER INTELLIGENCE & SECURITY

Contact us today
to learn more at
Info@dtexsystems.com

ABOUT DTEX SYSTEMS

DTEX Systems helps hundreds of organizations worldwide better understand their workforce, protect their data and make human-centric operational investments. Its Workforce Cyber Intelligence & Security platform brings together next-generation DLP, UEBA, digital forensics, user activity monitoring and insider threat management in one scalable, cloud-native platform. Through its patented and privacy-compliant meta-data collection and analytics engine, the DTEX platform surfaces abnormal behavioral "indicators of intent" to mitigate risk of data and IP loss, enabling SOC enrichment with human sensors and empowering enterprises to make smarter business decisions quickly.

To learn more about DTEX Systems, please visit dtexsystems.com.